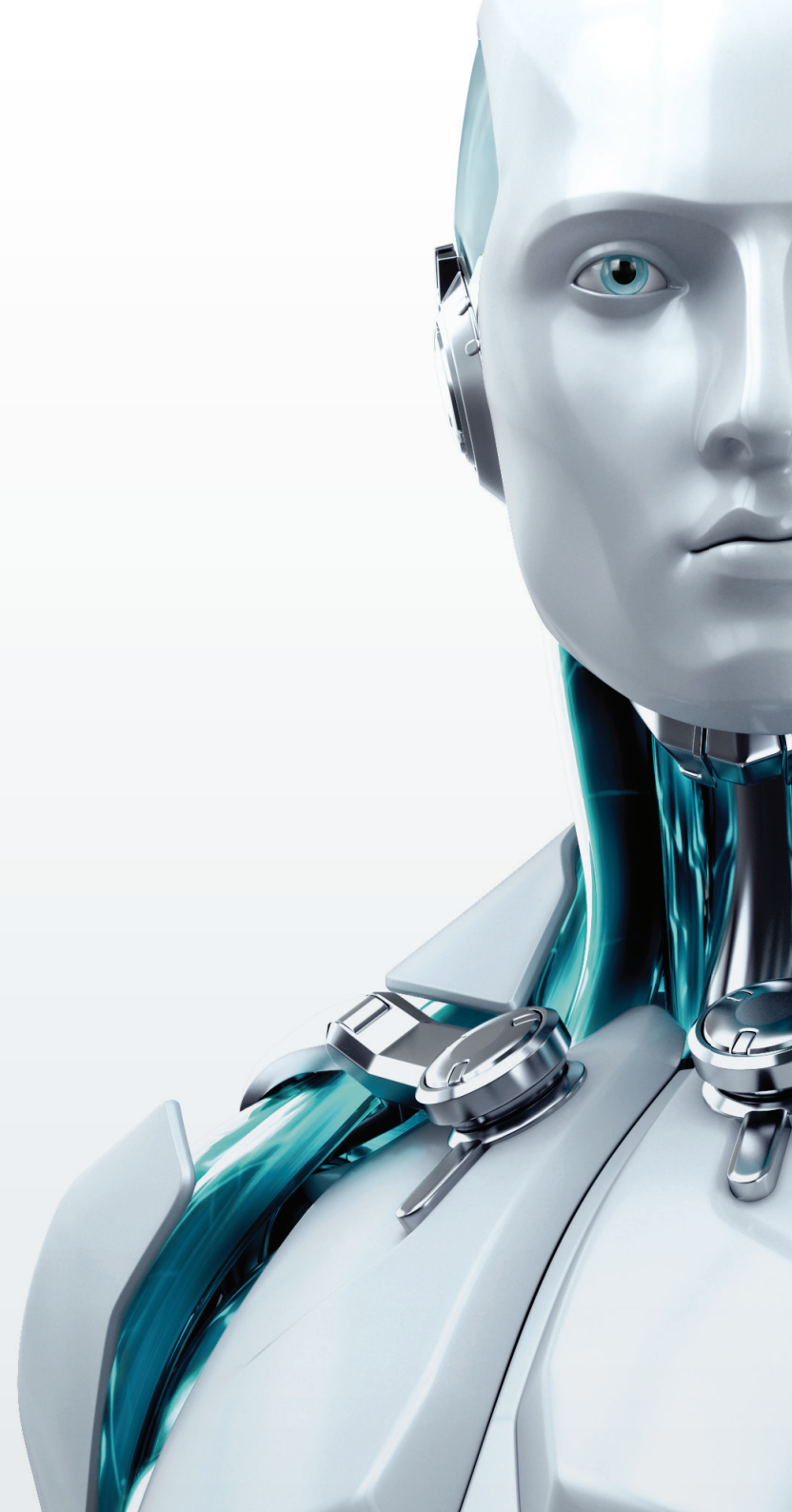


# ESET FILE SECURITY

FOR MICROSOFT WINDOWS SERVER  
FOR MICROSOFT WINDOWS SERVER CORE



[www.eset.co.uk](http://www.eset.co.uk)





## Operating Systems:

Microsoft Windows Server 2000  
 Microsoft Windows Server 2003 (32 & 64-bit)  
 Microsoft Windows Server 2008 (32 & 64-bit)  
 Microsoft Windows Server 2008 R2

Microsoft Windows Server 2008 Core  
 Microsoft Windows Server 2008 R2 Core

## Processor Architecture:

Intel®/AMD® x86/x64



## WHAT IT DOES

### Antivirus and Antispyware

Eliminates all types of threats including viruses, rootkits, worms and spyware  
 Provides real-time on-access scanning of the server-stored data  
 ESET Self-defense prevents malware and unauthorised users from disabling the security of the system  
 Powered by the advanced ThreatSense® technology combining speed, accuracy and minimal system impact

### Cross-platform Protection

Eliminates malware targeting all platforms, including Windows, Mac and Linux operating systems  
 Prevents malware from spreading from one platform to another

### Low System Demands

Delivers proven protection while leaving more system resources for the server's vital tasks

### Remote Administration

Compatible with ESET Remote Administrator and supports management through a web interface  
 Allows you to remotely deploy, manage, update, execute scripts and report on all instances of ESET File Security for Microsoft Windows Server (Core)  
 Gives the option to schedule on-demand scans, actions and security tasks  
 Features fully-fledged command line for simplified management of individual Server Core installations

### Smooth Operation

Identification of user accounts used in infiltration attempts  
 Password protected uninstallation  
 Automatically excludes critical server files  
 Automatically recognises server software such as Microsoft SQL Server and Microsoft IIS  
 Automatically detects server roles to exclude critical server files like data stores and paging files from on-access scanning to decrease overhead

### ESET SysInspector

Performs in-depth system analysis to identify potential security risks (not available for Core version)

### ESET SysRescue

Allows you to create an automatically bootable OS image with installed security solution to clean deeply nested malware and restore system operations (not available for Core version)